

UNISTRUT® Solar Installation Products

Installation demonstration using Unistrut Solar Clamps

BROCHURE

UNISTRUT®

SOLAR FRAMING COMPONENTS

A PART OF

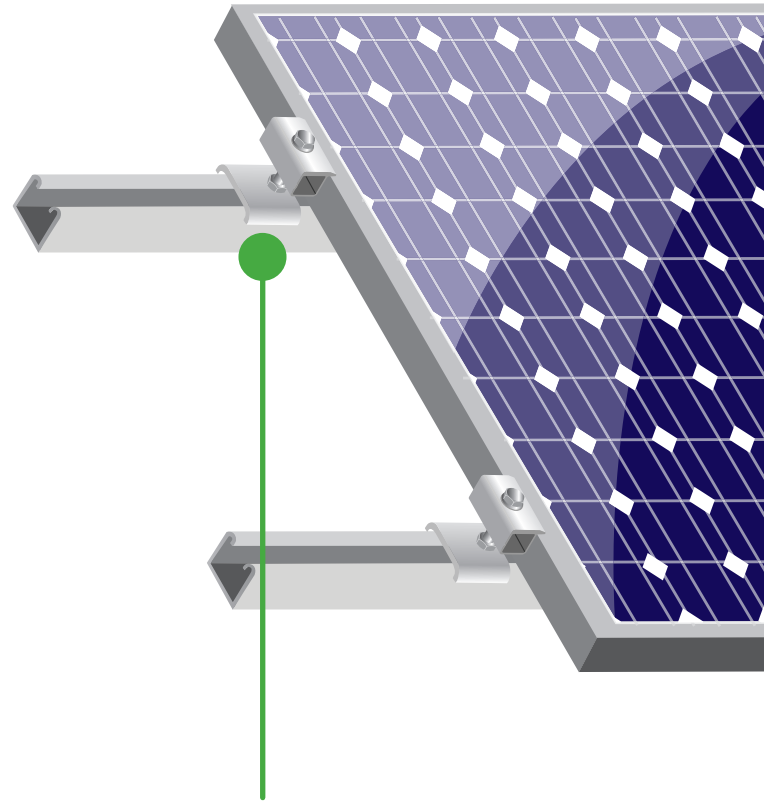


Key Advantages

- The market's only specific panel mounting components made exclusively for use with Unistrut.
- Simple design used by the industry for a variety of installation methods and applications.
- Stainless steel hardware included with all solar clamps.
- Available in Black or Silver Anodized (Material AA-6063-T6) for corrosion protection and sleek appearance.
- Best fit with Unistrut channel to create less penetration, and superior slip resistance.
- Designed for maximum loads up to 90 miles per hour.
- Available and supported by Unistrut's national network of distributors.
- BUY AMERICA – MADE IN THE USA

**Please inquire or visit
www.unistrut.com**

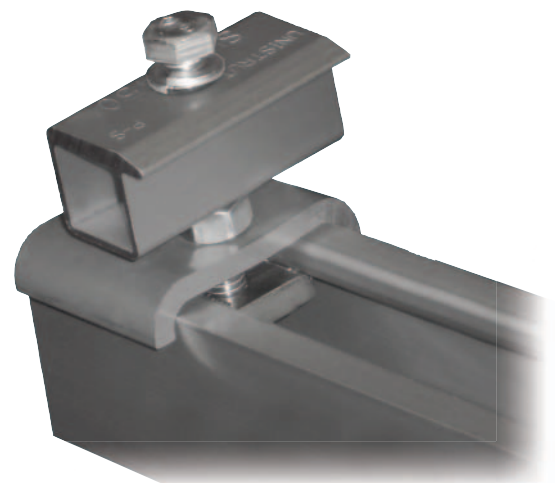
Unistrut Solar Co

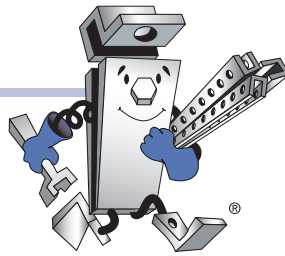


SR200 – Solar End-Clamp

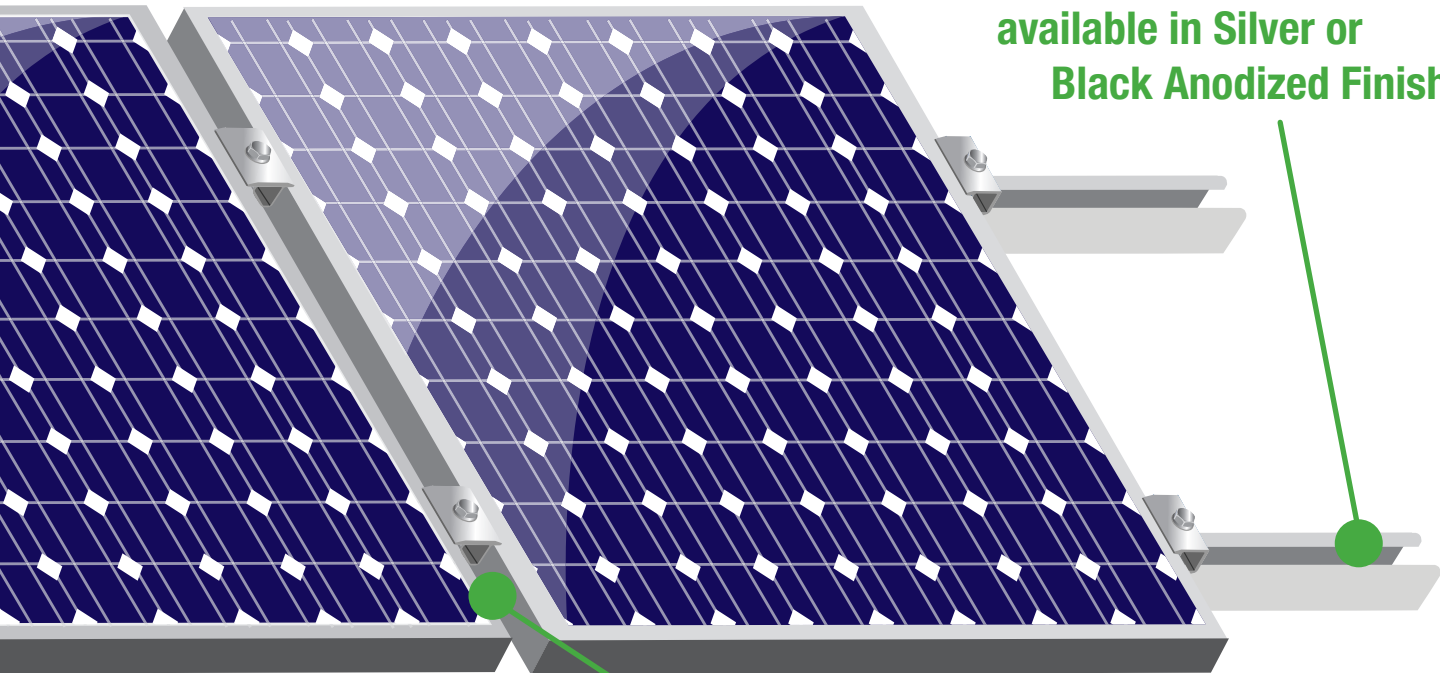
- End-clamp design for use with strut based racking system.
- Patent-pending end-stop feature allows use with vertical strut.
- Meets uplift loads of 350 lbs.

* Patent Pending





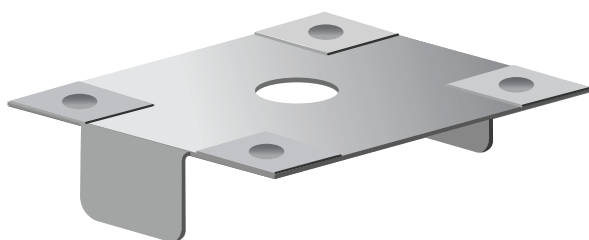
Aluminum Channel
available in Silver or
Black Anodized Finishes



WEEB – WMC

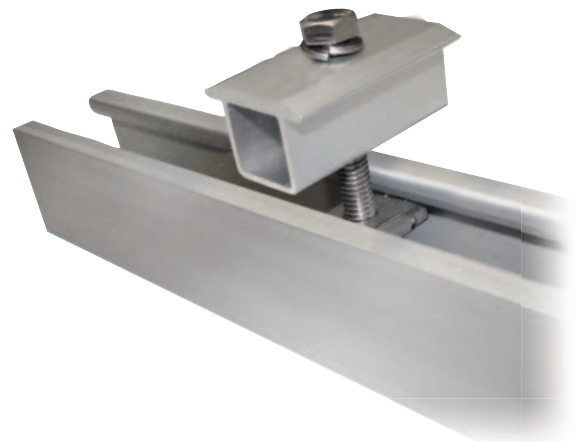
WASHER ELECTRICAL EQUIPMENT BONDING

- Patented design features stainless steel teeth that pierce into anodized aluminum, providing a gas tight connection which prevents oxidation.
- Meets ANSI/UL467 requirements for bonding/grounding systems.
- Quick installation that is safe, reliable and consistent.



SR100 – Solar Mid-Clamp

- Mid-clamp design for use with strut based racking system.
- Provides .8" (21 mm) panel spacing.
- Meets spacing requirements of WEEB-WMC.
- Meets uplift loads of 350 lbs.



16100 South Lathrop Avenue
Harvey, IL 60426
TOLL-FREE / 800-882-5543
FAX / 708-339-7814
www.unistrut.com

585 Finley Avenue
Ajax, Ontario, L1S 2E4 Canada
PHONE / 905-683-8131
FAX / 905-683-8987



UNISTRUT®

Columbia-MBF™

KAF-TECH™



UNISTRUT™
Construction

GEM™
FABRICATION

